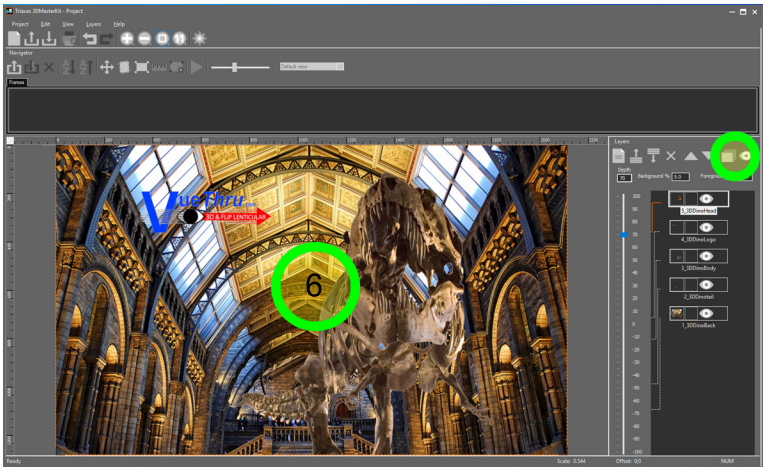


6 Next, Click on **Generate Multiview Frames**



7 **Verify Printer Resolution,**

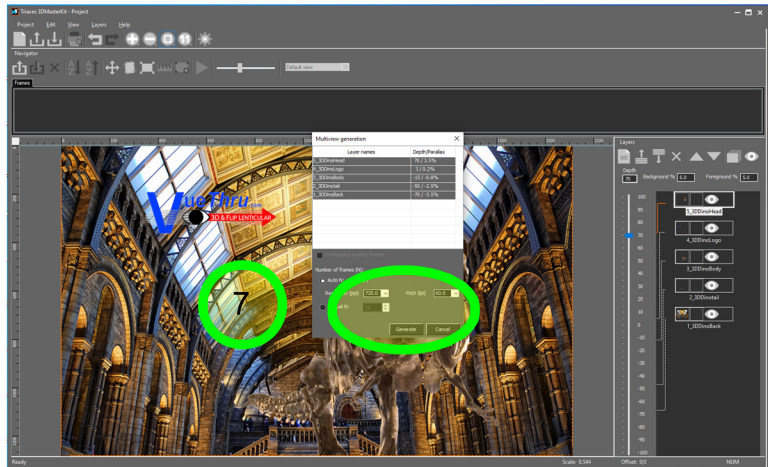
DNP Dye Sub use 600 dpi.

Verify Lenticular Lens LPI

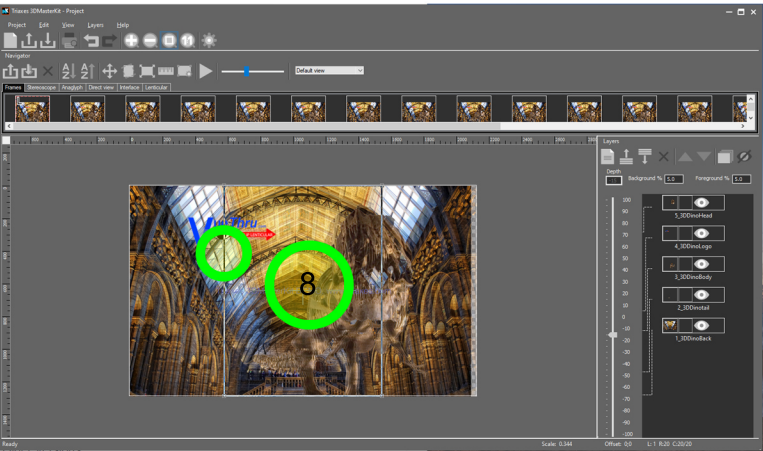
Use 60 LPI for VueThru 60 LPI
Lenticular Photo Frames and Lens

Verify your depth settings
and click **Generate**.

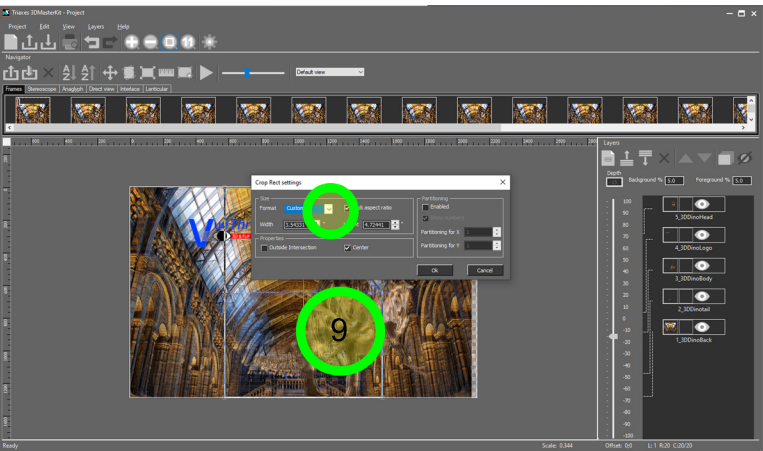
3D MasterKit will create the layers
that will be interlaced for your graphics.



8 **Right Click** on the **Outline Box** to Open
Print Size tool.



9 Use **Pulldown Tab** to Select Preset
Size or UnCheck Lock Aspect Ratio
and Add your Custom Size.



10 Use **Pulldown Tab** to Select Custom Size
and **Uncheck** the **Lock Aspect Ratio**. For
DNP type 6.2 Width x 4.2 Height. Click OK.

